

Setting Up Version Checker

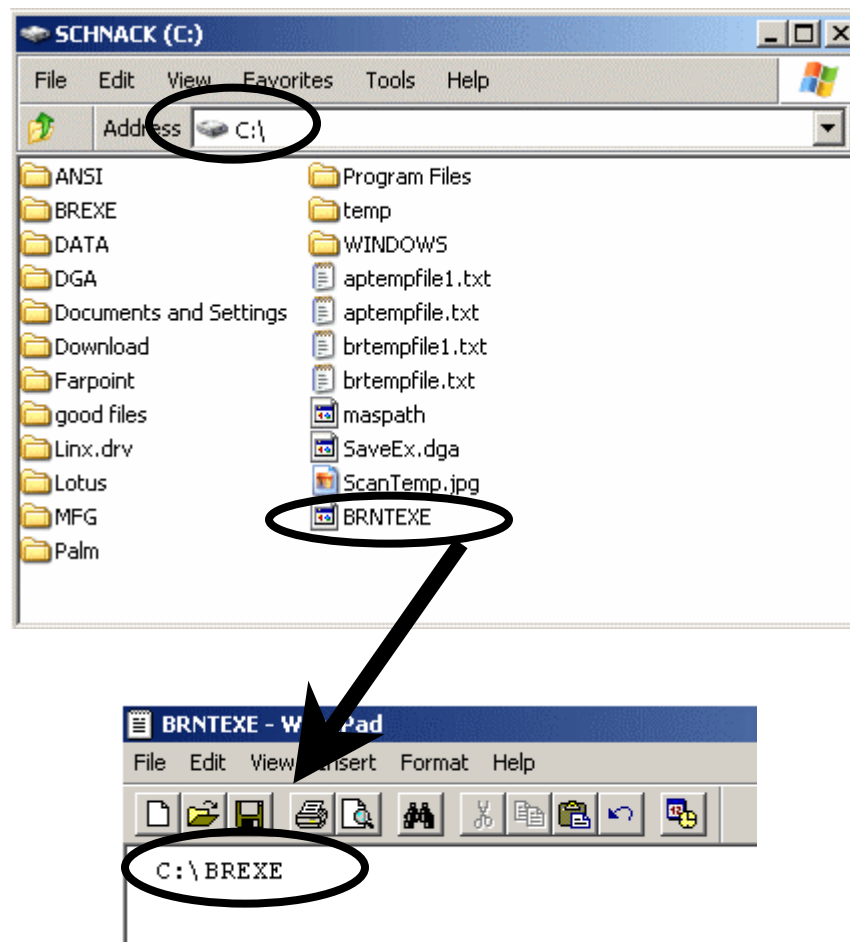
To make updating client machines easier, Bradoc has developed a version check program. With this system feature, the manager only needs to update one location, which will then update the other machines.

Common Question 1 : “How does this work?”

Each machine using Bradoc has a C:\BREXE folder. In this directory will be a MEDMAN.exe and a BRADOC.exe file. The short cut on the desktop is a link to the BRADOC.exe program. The BRADOC.exe program checks the version of the MEDMAN.exe in the local machines C:\BREXE folder and compares it to the version of the MEDMAN.exe stored on the HOST machine (i.e. server). This path is established and stored in the C:\BRNTEXE file. If the versions are different, the BRADOC.exe program then runs the SETUPEX.exe file located on the host machine. If the versions are the same, the BRADOC.exe file then runs the MEDMAN.exe file, or better known as Bradoc Data Management software.

Common Problem 1 :“I need the update, but it just won’t run.”

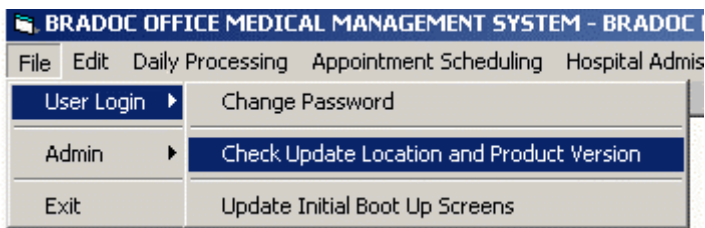
This problem is due to the file path stored in the C:\BRNTEXE file. Odds are that the file path stored in the C:\BRNTEXE file is the same location as the MEDMAN.exe stored on the users local machine, C:\BREXE.



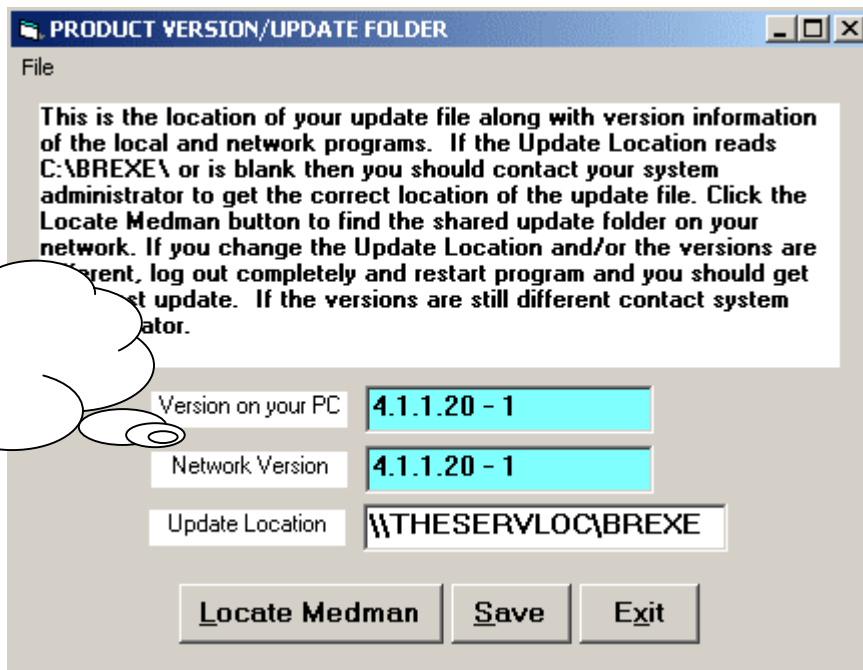
If this is the case, there are two ways to remedy this situation.

The first way is to delete the C:\BRNTEXE file. When you log into Bradoc Data Management, a dialog box will ask you to find the MEDMAN.exe. **DO NOT** accept the MEDMAN in the C:\BREXE folder. Click the drop down box and browse to the host machine (i.e. server) and find the MEDMAN.exe there.

The second way is to open Bradoc Data Management and click FILE → User Login → Check Update Location and Product Version.



After the user clicks **Check Update Location and Product Version**, they will see this screen.



Version on your PC and Network version should be the same.

If the Update Location is not the path of the host machine, such as C:\BREXE you need to click **LOCATE MEDMAN** and a dialog box will ask you to find the MEDMAN.exe. DO NOT accept the MEDMAN in the C:\BREXE folder. Click the drop down box and browse to the host machine (i.e. server) and find the MEDMAN.exe there. After you have located the correct MEDMAN.exe, be sure to click **SAVE** and then click **EXIT**.